

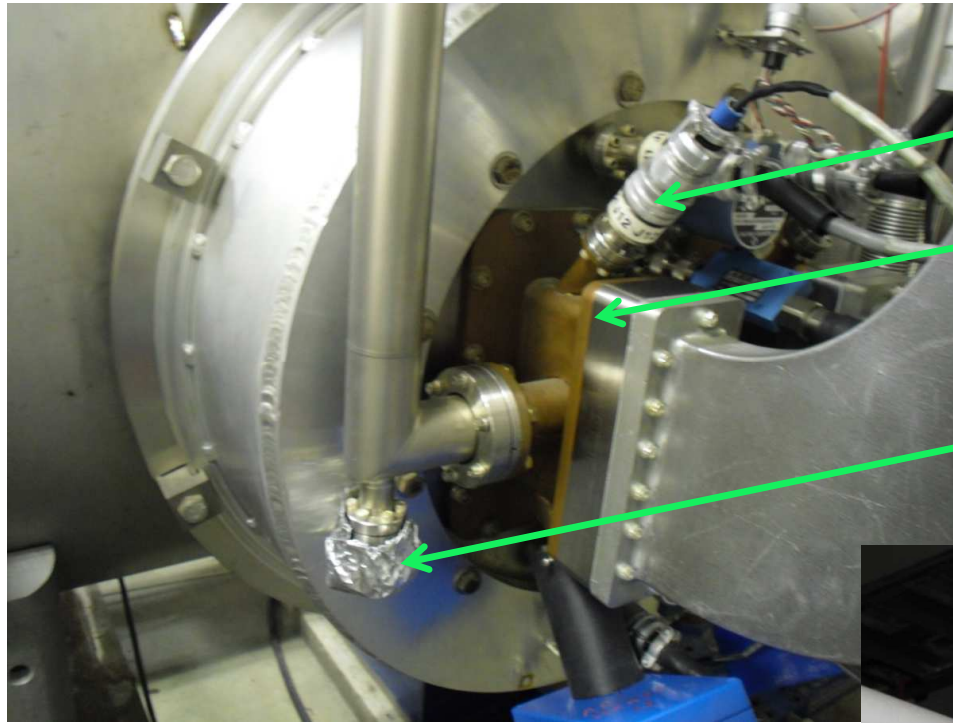
# LSD Deputy Report

## 9/12/13

Steve Suhring

## **Summary 9/4/13 - 9/11/13**

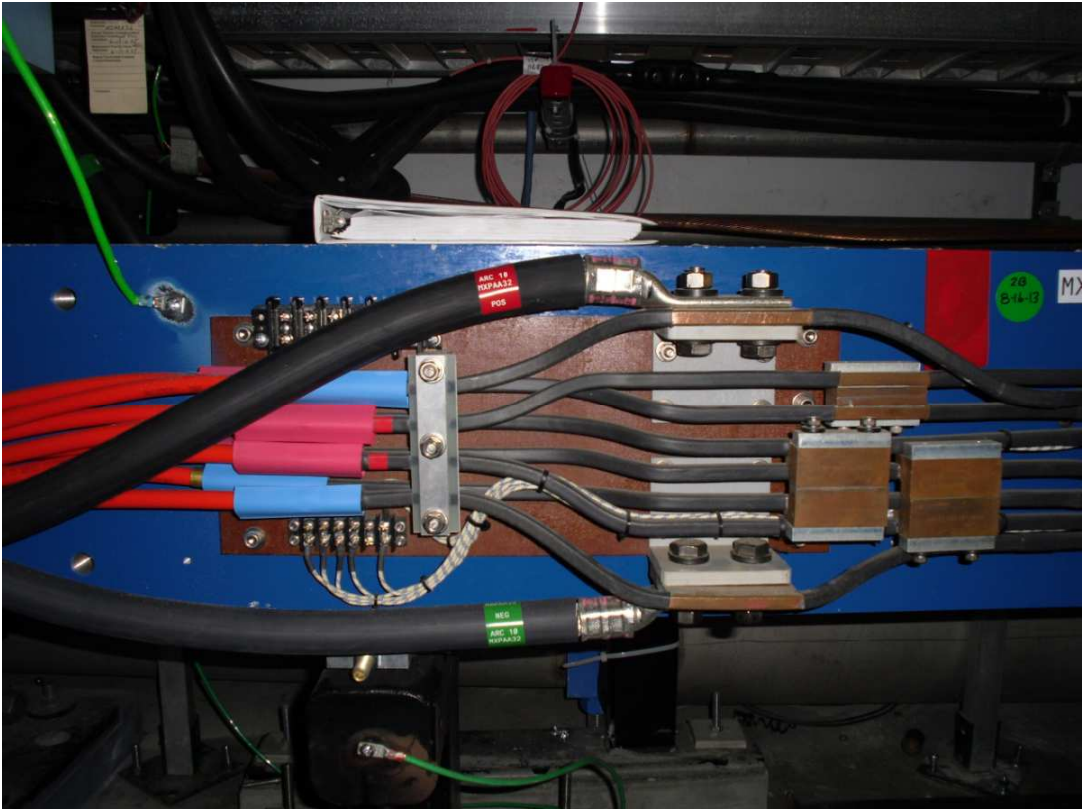
- 1/4CM warm windows and cooldown
- Magnet Hookup
- 2E+ Beamline Installation
- Tagger Transport girders
- MARC2A power supply checks
- PSS Certification



1/4CM IR detectors,  
ceramic windows,  
and  
burst disk

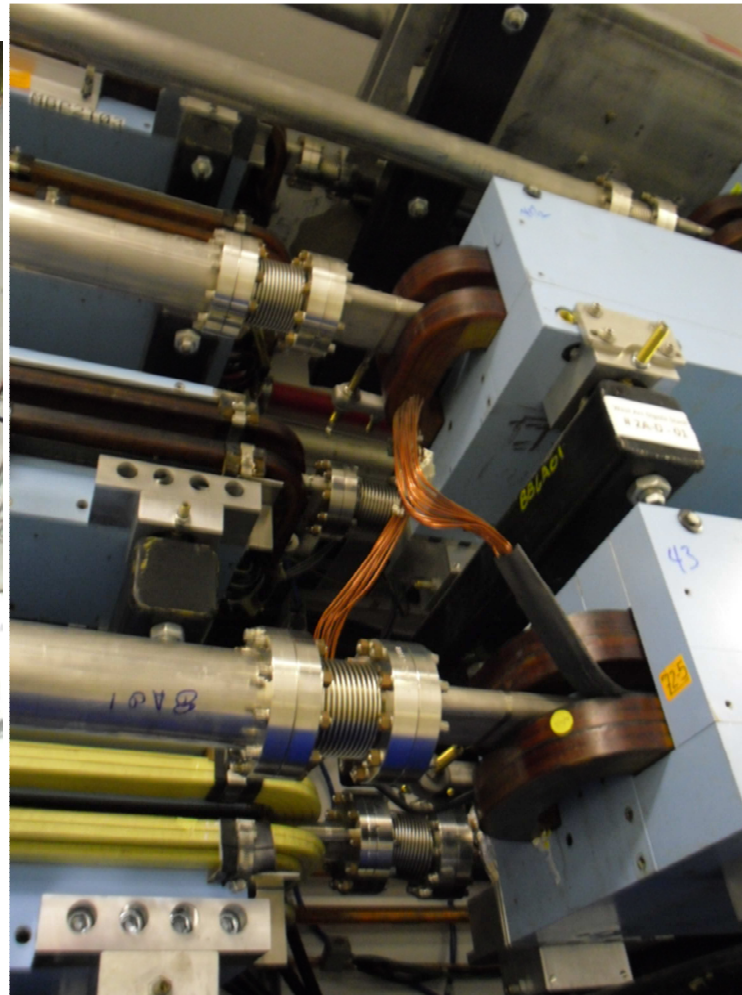
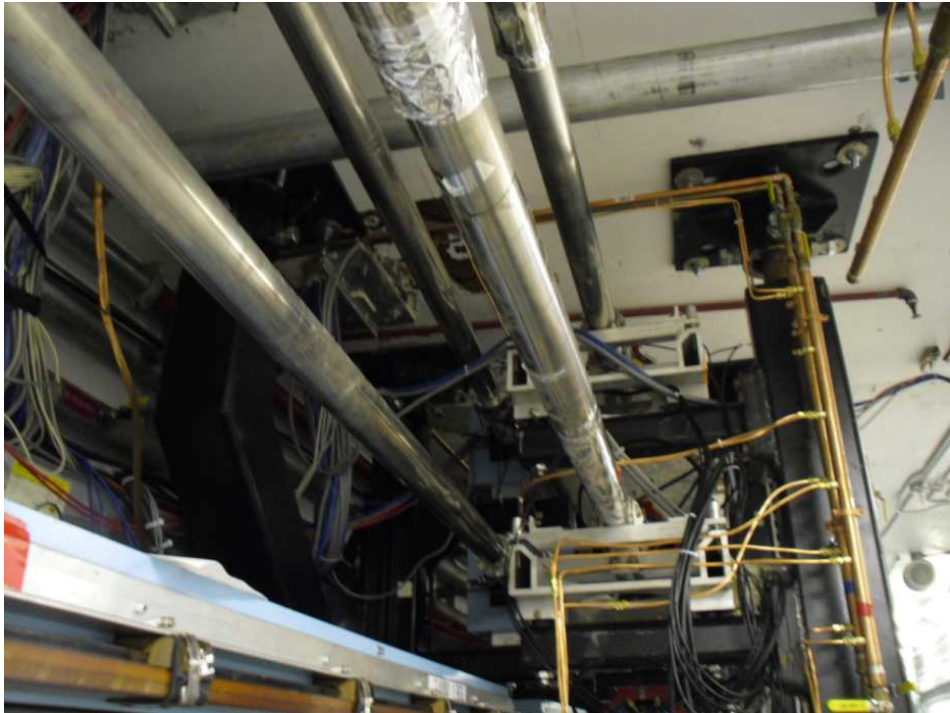


1/4CM Cooldown



MXPAA32

Magnet Hookup



2E+ beamline  
installation



Tagger Transport girders



MARC2A checks



PSS Certification



## SAD Calendar Link

<https://devweb.acc.jlab.org:8181/calendar/view-outlook>